

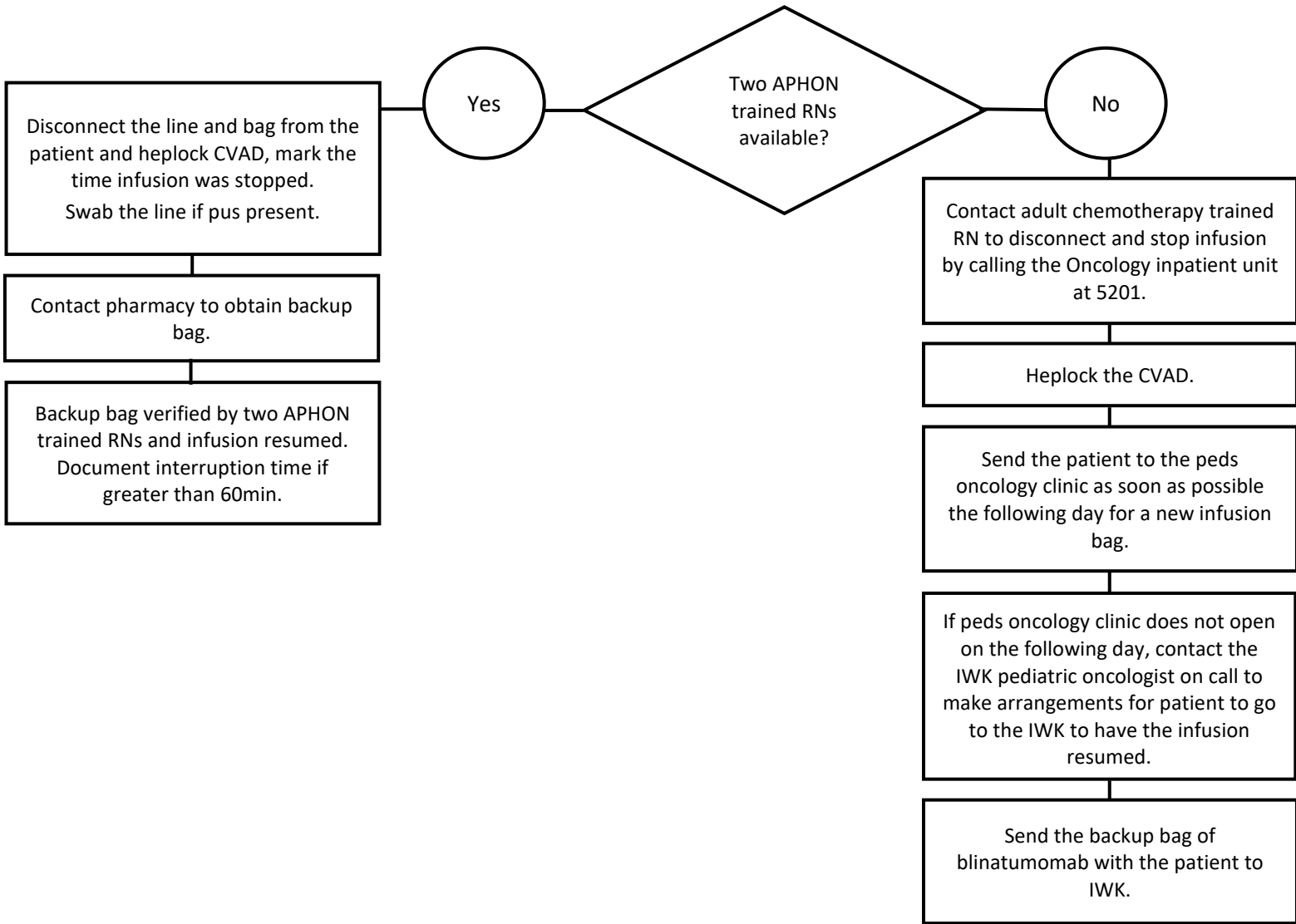


Blinatumomab Troubleshooting

Disconnection/leak in tubing or blinatumomab bag

All troubleshooting algorithms for the administration of blinatumomab can be found on the APPHON website at:
www.apphon-rohppa.com/en/blina

If APPHON trained or adult chemotherapy trained RNs are not available for any period of time, the patient must remain within 1 hour of the IWK.

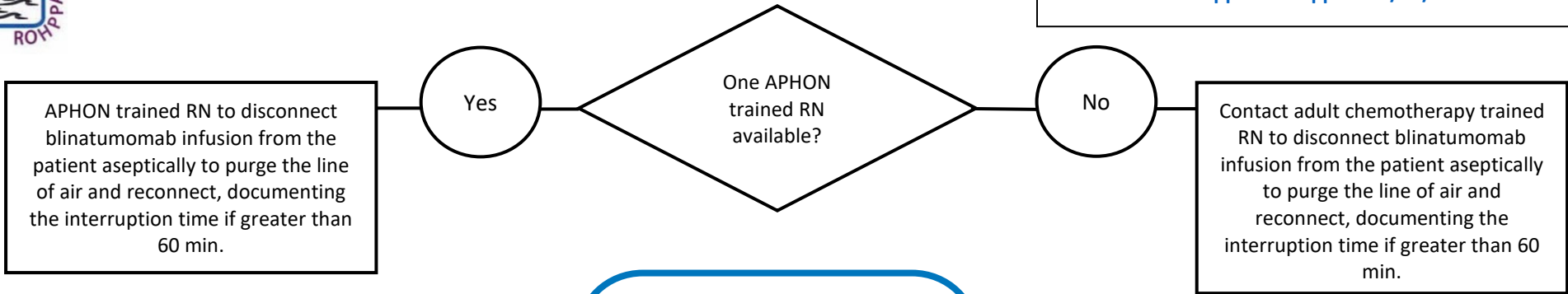




Blinatumomab Troubleshooting

All troubleshooting algorithms for the administration of blinatumomab can be found on the APHON website at: www.aphon-rohppa.com/en/blina

Air in line



Patient presents to ED or clinic with fever

Refer to IWK guidance document for physicians for the management of blinatumomab for children with cancer in Advanced Centers in the Maritimes. Fever management for a child receiving a blinatumomab cycle.

